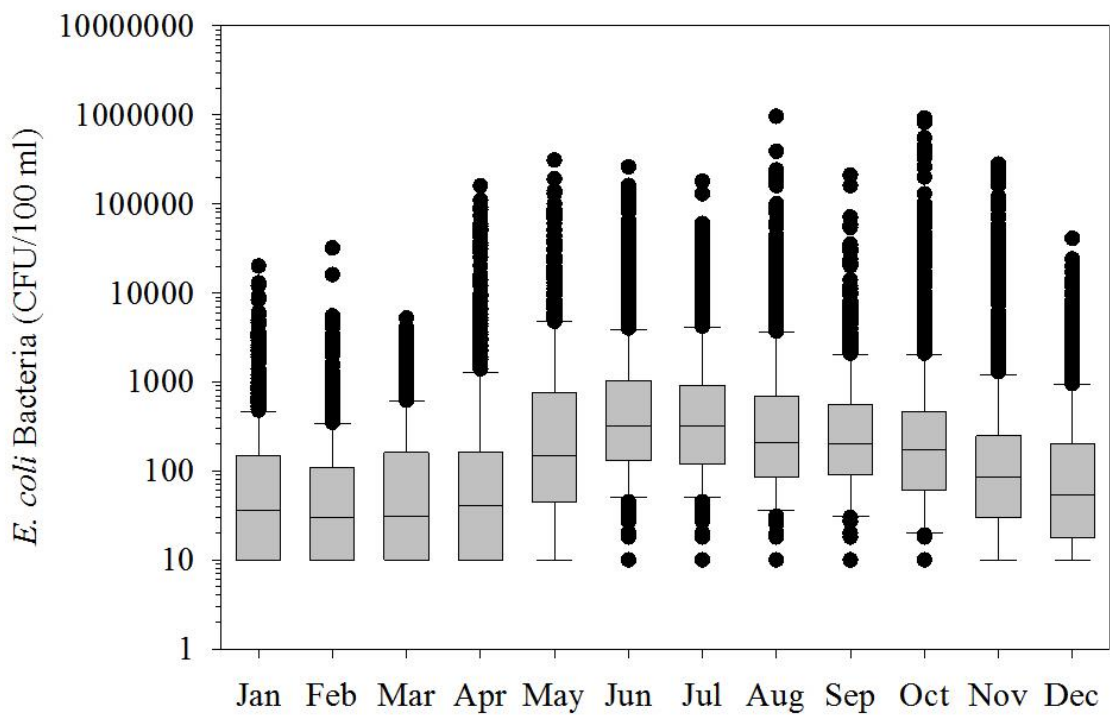
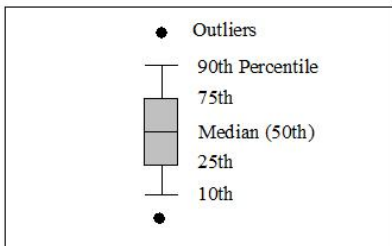


Ambient Water Monitoring Program - All Stream Sites  
*E. coli* Bacteria (CFU/100 ml)

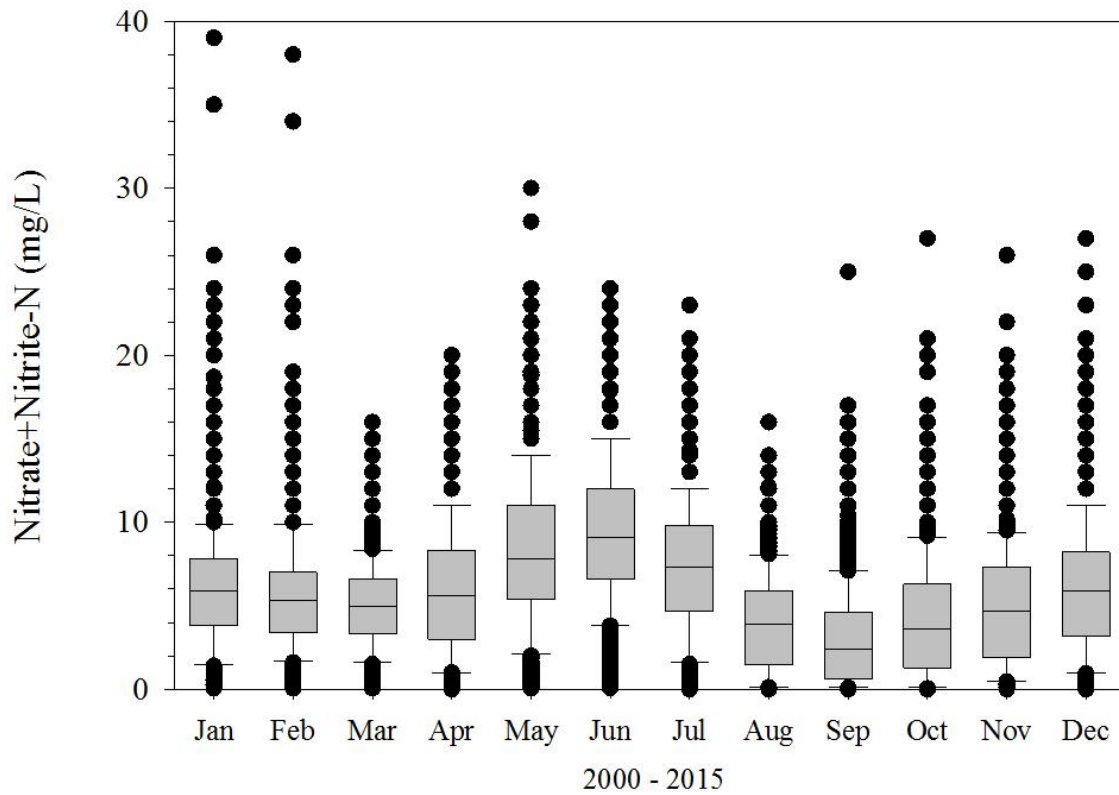


2000 - 2015

Quantification Limit = 10 CFU/100ml



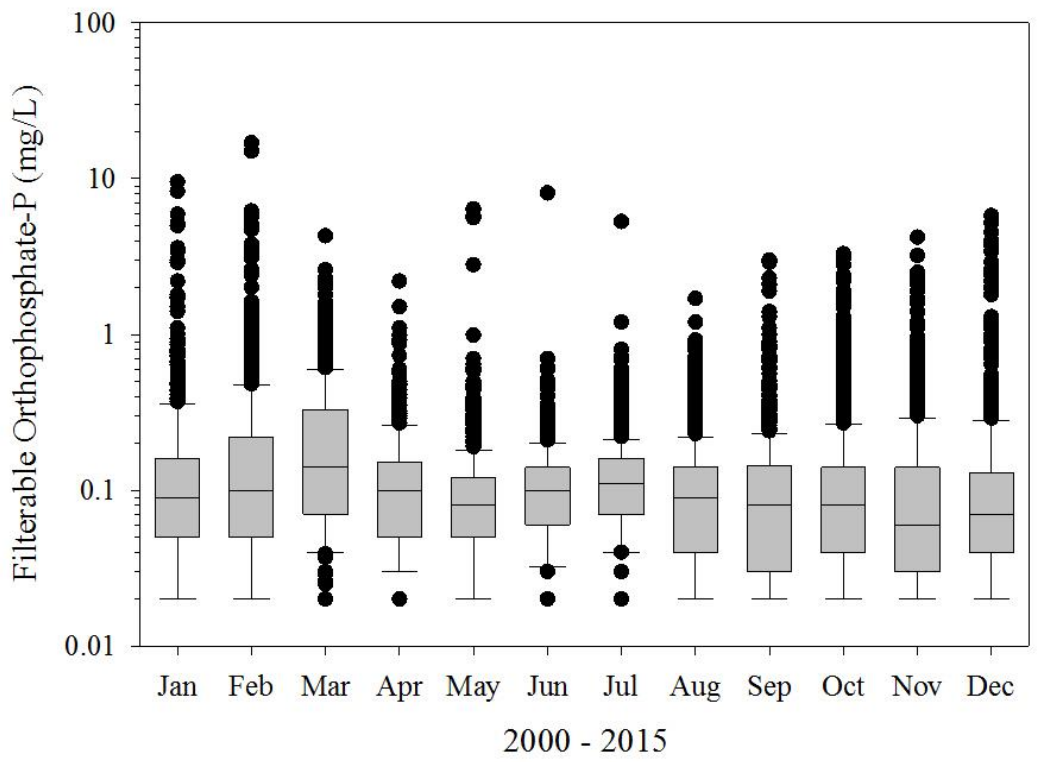
Ambient Water Monitoring Program - All Stream Sites  
Nitrate + Nitrite as N (mg/L)



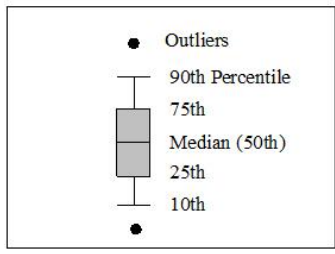
Quantification Limit = 0.1mg/L

- Outliers
- 90th Percentile
- ▒ 75th
- Median (50th)
- ▒ 25th
- 10th
-

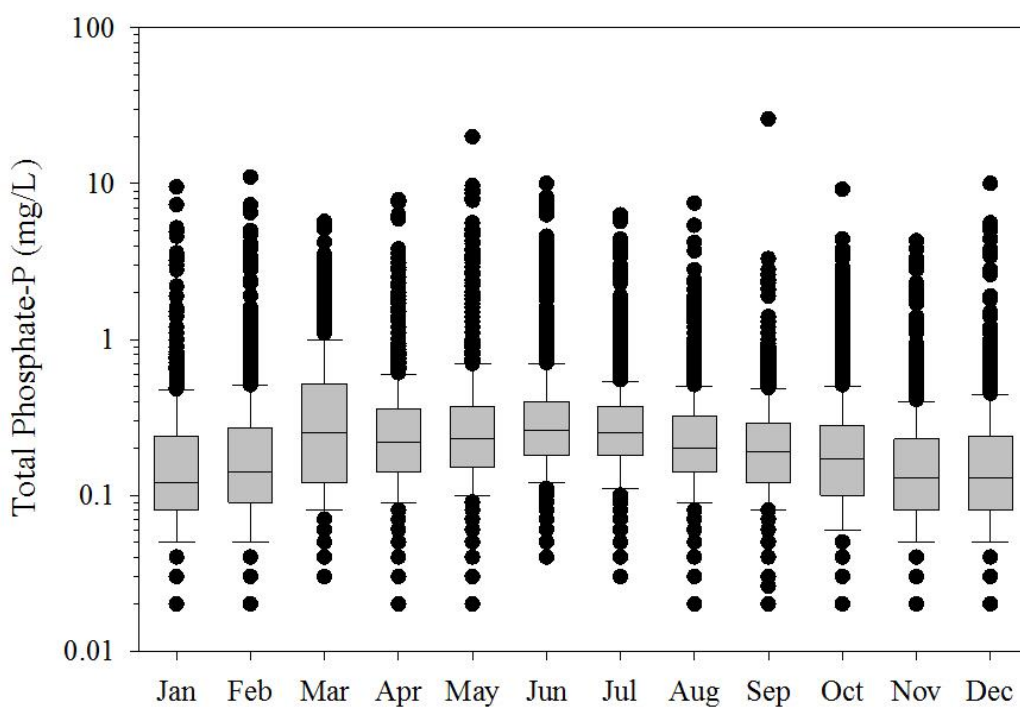
Ambient Water Monitoring Program - All Stream Sites  
Filterable Orthophosphate as P (mg/L)



Quantification Limit  
0.1 mg/L; 2000-2001  
0.05 mg/L; 2002-2003  
0.02 mg/L; 2004-2015

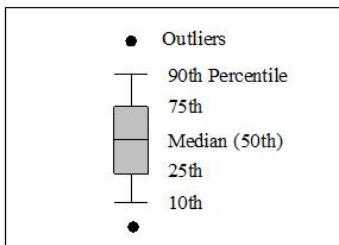


Ambient Water Monitoring Program - All Stream Sites  
 Total Phosphate as P (mg/L)

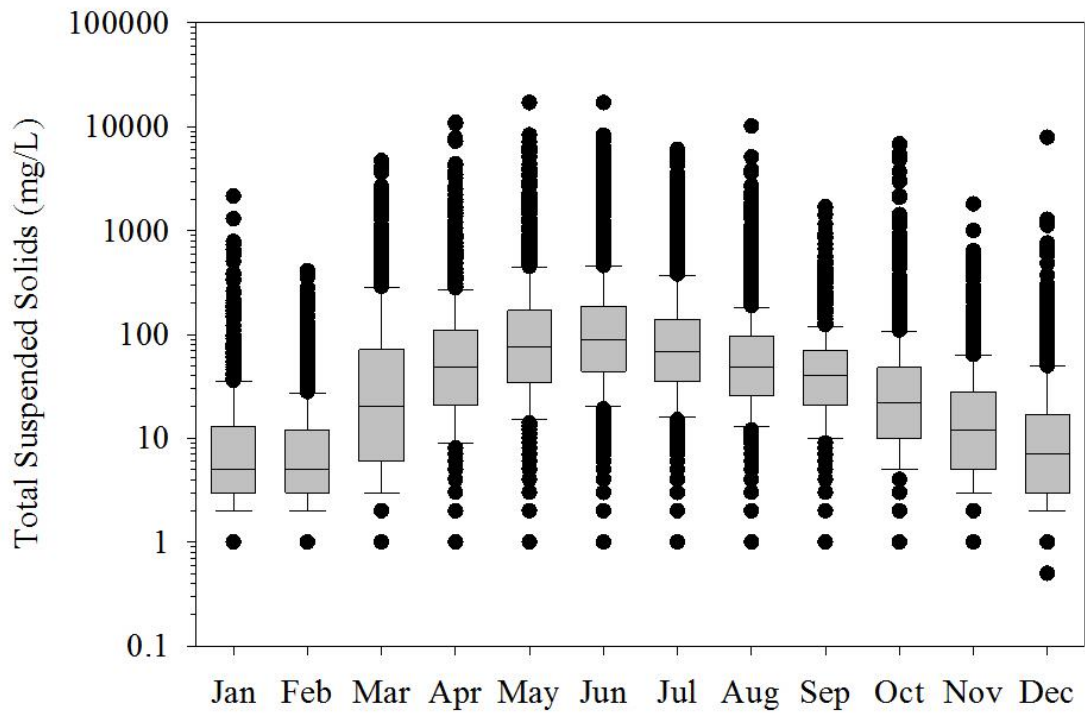


2000 - 2015

Quantification Limit  
 0.1 mg/L; 2000-2001  
 0.05 mg/L; 2002-2003  
 0.02 mg/L; 2004-2015



## Ambient Water Monitoring Program - All Stream Sites Total Suspended Solids (mg/L)



2000 - 2015

Quantification Limit = 1 mg/L

